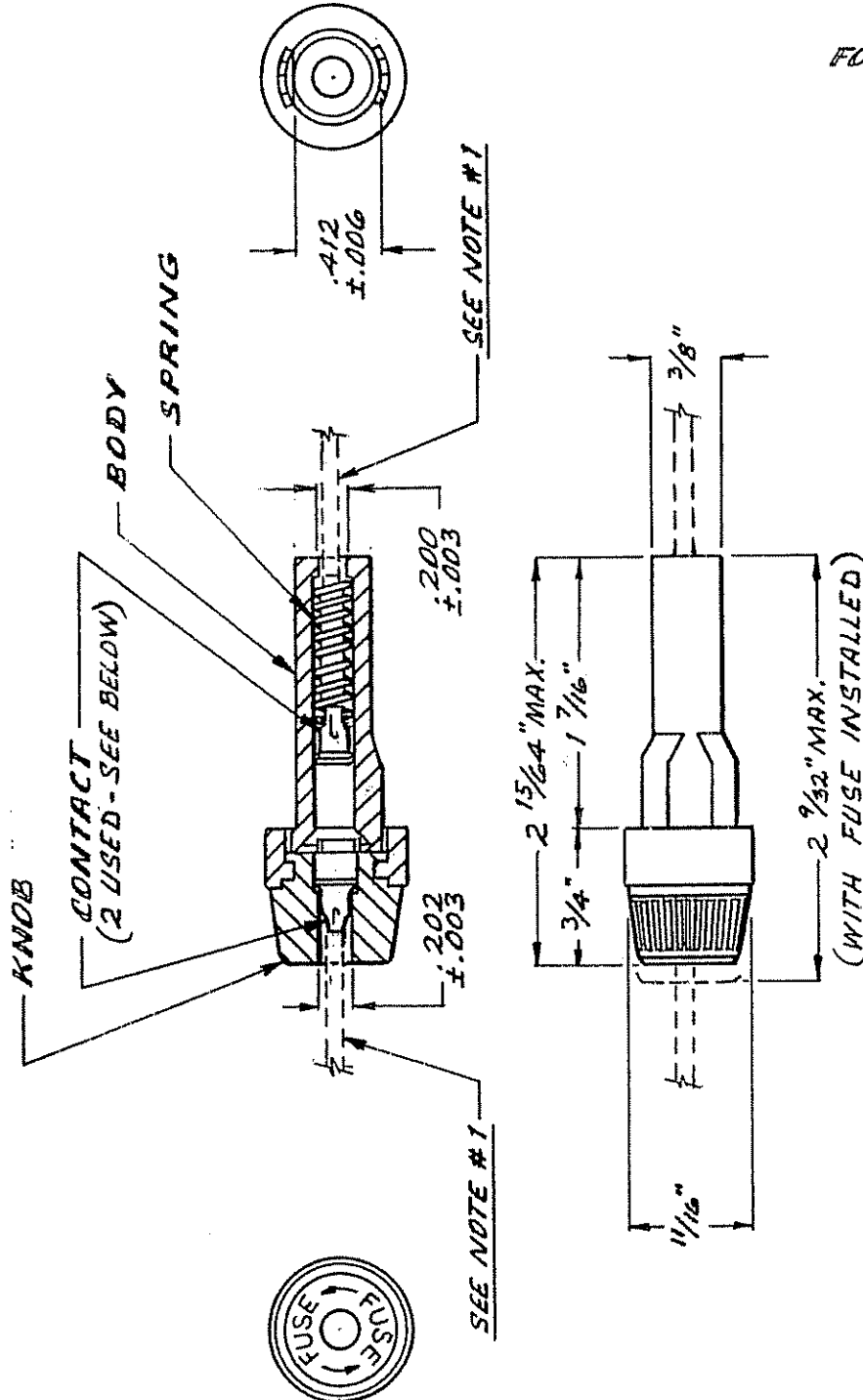


* THIS DOCUMENT CONTAINS CONFIDENTIAL AND TRADE SECRET INFORMATION WHICH IS THE PROPERTY OF BUSSMANN DIVISION OF COOPER INDUSTRIES, INC. AND RECEIPT OR POSSESSION DOES NOT CONVEY ANY RIGHTS TO LOAN, SELL OR OTHERWISE DISCLOSE SAID INFORMATION. REPRODUCTION OR USE OF SAID INFORMATION FOR ANY PURPOSE OTHER THAN THAT IN CONNECTION WITH WHICH SAID INFORMATION WAS SUPPLIED MAY NOT BE MADE WITHOUT EXPRESS WRITTEN PERMISSION OF BUSSMANN. THIS DOCUMENT IS TO BE RETURNED TO COOPER INDUSTRIES, INC. UPON REQUEST AND IN ALL EVENTS UPON COMPLETION OF THE PURPOSE FOR WHICH IT IS LOANED.	SCALE	UNLESS OTHERWISE SPECIFIED TOLERANCES TO BE DECIMAL $\pm .005"$ FRACTIONAL $\pm 1/64"$ ANGULAR $\pm 2^\circ$	DATE 8-6-03	NO. HHJ
	<input checked="" type="checkbox"/>		TITLE FUSE HOLDER	
	Δ INDICATES CRITICAL DIMENSION	SUP NO. HHJ	DATED 3-22-02	
PAGE 1 OF 2		DWG JB	CK JS	CHANGE F
Ⓒ REVISED & REDRAWN		ENG AM	NO3069	
		BUSSMANN St. Louis, Missouri 63178		
		DISTRIBUTION 56/J		

FOR: 1/4" DIA. X 1 1/4" LONG FUSES



- NOTES:
- CONTACTS STAKED TO LEADS BY CUSTOMER.
 - USE TINNED NUT PANEL MOUNTING.
- FOR

PART NO.	CONTACT P/N	WIRE SIZE
HHJ-A	9838	#18 - #22
HHJ-B	9841	#12 - #16

Ⓒ REGULAR PACKAGING.
BULK PACKAGING.